

Introduction

Hot Spot! Takenotsuka

Do you know one of the hottest spots in Tokyo, Takenotsuka in Adachi City? Interest in “agriculture” is on the rise among young people in Japan these days. Adachi City, the third largest area in Tokyo has lots of rice fields and is famous for its green vegetables. So it’s called “Water and Green City, Adachi.” Takenotsuka, which is the northern district of Adachi City, has many farmer’s stores to get fresh vegetables as well as cafés that serve green vegetables. There are renovated apartments with vegetable gardens appearing as well. Many events for kids to learn “agriculture” and “food” are held.

It’s also noted for noodles such as Ramen, Udon and Soba. Especially Ramen is a must-eat.

In the ancient period when the Kanto Plain was mostly under water, many people lived in this district, because it was the most elevated area. In fact, lots of ruins or ancient tombs were found here. There are many attractive spots, such as old temples, shrines and unique parks with an irrigation canal like a river.

Why don’t you walk around here after eating noodles?

Takenotsuka, check it out!



Water
and
Green City

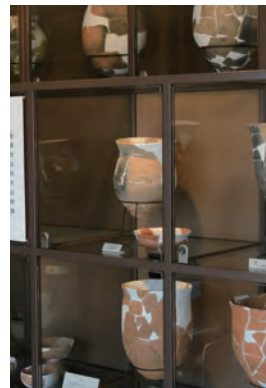
Takenotsuka,

Takenotsuka is the place where you can enjoy visiting historical places, walking around beautiful parks, learning a new style agriculture and eating delicious noodles.

History

A hub of trade from ancient time

In the ancient period when the Kanto Plain was mostly under water, Ikou district was on the coast of the Tokyo Bay, which was much larger at that time. Many people lived here and traded with Western Japan through the sea. A lot of unearthed articles displayed in Ikou Iseki Park show us the fact that this area was one of the most developed areas in the Kanto Plain.



The display in Ikou Iseki Park (D stamp)



Toneri-Juku (a post town: shukuba)

In the Edo period, Toneri-Juku developed as a relay town on the Akayama Road, which was a branch line of the Nikko-kaido Road. Many people with horses came and went at that time. The local market has been held regularly since then.

Toneri Bunka Market selling many burdocks is held in December at Toneri Hikawa-jinja Shrine. (G stamp)

Tera-machi (Temple town)

Ikou Tera-machi is a temple town stretching around the Hokima moat. Most of the temples in Asakusa suffered from the Great Kanto Earthquake in 1923. They searched for a place to relocate themselves and came to Ikou with their cultural properties. That was the beginning of the establishment of Tera-machi. Please enjoy spending a peaceful time in the town.

From agricultural to residential land

During the Showa era, this area was developed as an agricultural zone in Tokyo for the sake of the irrigation equipment prepared in the Edo period. The irrigation water also enabled the development of the textile dyeing industry in this area. In 1950s, the residential development by a railway company turned the town into a residential zone.

Old and New coexistence

“Showa House” used to be the residence of a metalworking factory owner and was designated as the Tangible Cultural Property of Japan for the first time in Adachi. The house was renovated as a café, because its Showa retro style was loved by many people. How about homemade sweets with coffee?



Engawa Café (Showa House)
2-5-10Nishi hikima ☎ 03-3883-0011
Open: 11:30~18:00 (Tuesday ~Friday)



Her homemade fruit tarts go perfectly with coffee and tea.



Mrs. Uri Hirata, the café owner, makes sweets and tea.



Ikou Farm / 2-17-8Ikou ☎ 0120-975-257
Mr. Kuniyasu Yamazaki, the farm owner

Agriculture

Rental farms in a new style

Mr. Kuniyasu Yamazaki is running “Ikou Farm” in a new way. He renovated the old apartment taken over from his father into “Wakamiya Haitsu”, a new style apartment with vegetable gardens through his idea: “Farm can bond community.” He also rents his farms to the community. Here is a spot, if you want to see “a new style farm”.



The event room of Wakamiya Haitsu apartment

Horticultural farmers

“Farm Yokota” near Toneri station is a café that serves healthy lunch. The owner, Mrs. Kaya Yokota called Grandma Kaya is working with vigor, though over eighty. She makes lunch with seasonal fresh vegetables grown by her son. Many customers who come to the café are given her energy. Running a café by horticultural farmers is a new movement here as they can use fresh vegetables grown by themselves. This is the best place where you can see a new way of agricultural area.



Farm Yokota

1-11-20Toneri ☎ 03-3897-9553
Open: 10:00~17:00 (Monday ~ Sunday except Thursdays and the first and third Wednesdays)
You can eat lunch on the terrace on a fine day.



Grandma Kaya (left) and her daughter-in-law, Mayumi (right)

Lunch dish using fresh vegetables from the garden

Takenotsuka people Love new things

“People here love new things since it was a prosperous town.” said Mr. Kyuzaburo Okuma, the 8th of Okuma farm. Adachi is famous for its green vegetables such as Japanese mustard spinach or green soybeans nowadays, but it used to be marshland where lotus and arrowhead were mainly grown. They improved the land for farming and cultivated vegetables and rice. When Western vegetables like broccoli and Boston lettuce were introduced to Japan after the war, they became the first persons to cultivate them in Tokyo.



4 Okuma Nouen Chokubaijo / 5-17Toneri
Open: 15:30 ~18:00 (Monday ~ Saturday)
Mr. Kyuzabro Okuma (right) and his son, Takashi (left) sell fresh vegetables at discount price.

Rice-planting machine

Rice farmer got to use the machine for planting rice after the war. It is said that Toneri farmers introduced the rice machine for the first time in Tokyo, then, it became popular all over the country.

Eat greens

There are lots of local farmer’s stores selling fresh vegetables in Takenotsuka despite being in the downtown area. They sell them directly to customers, so you can talk to the farmers who grew the vegetables you want to buy.

3 Noodle

Yummy, Inexpensive, Takenotsuka Ramen noodles

The mass media featured Takenotsuka Ramen noodles, because many Ramen shops are gathered here and they serve very unique and creative Ramen using diverse broth, such as seafood, salt, pork bone, blend stock, soybean paste. You can choose thick or thin noodles and dipping noodles as well. “Muto Seimenjo (a Ramen shop)” is celebrated for its original Ramen made from additive-free ingredients and seafood broth. Mr. Shinichi Muto, the owner said “Many families live in this area since the land price is less expensive than that of central Tokyo. That may be why Ramen shops are gathered here. When you want to eat Ramen in Tokyo, why don’t you come to Takenotsuka? Ramen prices are about 200 yen cheaper than that in central Tokyo. It’s much more affordable.” Enjoy hunting for Ramen shops in Takenotsuka!



Muto Seimenjo

6-7-14Takenotsuka ☎ 03-3850-4551
Additive and chemical free homemade noodles made from domestic flour have five choices of noodle’s thickness and two tastes of rich chicken or seafood and chicken soup.

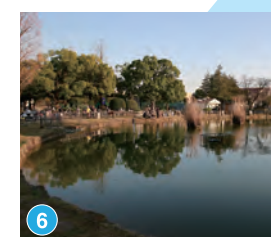


soy sauce Ramen

4 Green

Adachi’s No. 1

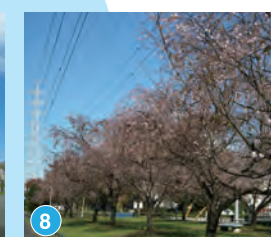
Adachi City has the largest park area in Tokyo’s 23 wards. There are lots of well-maintained parks for relaxation and refreshment for everyone from children to elderly people. It also has many unique parks where families can enjoy themselves all day long. You can use lots of well-equipped facilities for sport, such as a bathing center and a golf center at a reasonable price. Please don’t forget to visit many historic temples and shrines as well as ancient remains.



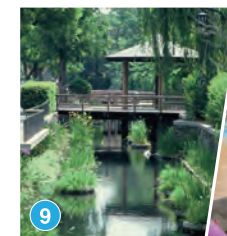
6 Motofuchie Park
(with the park of living things)
2-17-1Hokima
It has the park of living things and a fishing pond too.



7 Toritsu Toneri Park
1-1Tonerikouen
It’s the largest park in Adachi City, which has a BBQ area and a ballpark and so on.



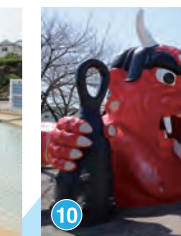
8 Kohoku Hokubu Ryokudo Park
2-13Yazaikou~3-20Saranuma
It has 200 cherry trees along the path. Among 10 kinds of cherry trees, “Jugatsu-Sakura” is especially well known as a rare tree since it blooms both in the spring and autumn.



9 Minumadai Shinsui Park
4-8Kojiyahoncho~4-5Toneri
It’s a long and narrow shaped park which has a small pool for kids called a splash pond.



10 Toneri Ikiiki Park
(alias Damon Park)
6-3-1Toneri
The Big Damon Slide is very popular with children.



11 Toneri Ryokudo Park
6Toneri~9Iriya
It’s a viewing spot famous for the 1.2km long tunnel of cherry blossoms alongside the Kenaga River in the spring.



Walk around Takenotsuka area in a day or take more times, it depends on you!
There are 10 places (A~J) to get stamps and 4 places (A, B, I, H) to get tokens (one per person).

*You need 7 or more stamps to get a token.
*Please note that you can't get stamps if the places are closed or holding festivals.

Stamp G Toneri Hikawa-jinja Shrine

The current beautiful wooden shrine was built entirely of cypress in 1836. The main hall is decorated with stunning sculptures of a dragon, a lion and a peony. Although they are protected by a fence, you can see them clearly, so it is definitely worth viewing. "Toneri Bunka market" is held in December.



Stamp is in the left side of the front shrine.

Stamp H Toritsu Toneri Park

It's one of Tokyo's largest parks with a dog's park, a giant hill slide, a BBQ area, a tennis court etc. and a toll parking lot.



Stamp is in the bicycle parking lot under Toneri-Koen Sta.

Stamp I Ada-Chari (Adachi Rental Bicycle)

You can rent a bike at three parking lots and return a bike at any of these three lots.

- Takenotsuka West bicycle parking lot (5-min. walk from Takenotsuka Sta. on Tobu-Skytree Line)
- Toneri-Koen Sta. Shita bicycle parking lot (under Toneri-Koen Sta. on Nippori-Toneri Liner)
- Daishimae bicycle parking lot (5-min. walk from Daishimae Sta. on Tobu-Daishi Sen)

15 yr. or more ¥200 per day
Weekday : 6:30 ~ 20:00
Sun. & Holiday: 8:00 ~ 20:00 at Takenotsuka West
8:30 ~ 12:30 at Toneri-Koen and Daishimae

Stamp J Enten-ji Temple

It has a close connection with a famous Japanese haiku poet, Issa Kobayashi who stopped by the temple on his journey. You can find a monument of his famous poem, "Lean frog". In the "Issa Festival", which is held on 23rd November, the Haiku competition among the school children is held and the Kaeru (Frog) sumo wrestling, with a man in a frog suit, takes place. The names of this temple and town are derived from the battle that took place here on the hottest day in June. "Enten" and "Rokugatsu" mean "hot weather" and "June".



Stamp F

Toneri Suwa-jinja Shrine

2-15-25Toneri

Once upon a time, there was a lady who came to marry a man in Toneri. She couldn't get along with his mother-in-law and finally killed herself in the Kenaga River. Her husband followed her. Her long hair was found in the river afterward. "Kenaga" means "a long hair". Suwa shrine enshrines the spirit of her husband. The main hall of the shrine does not face toward its gateway, but instead, it faces toward Nissato Kenaga shrine that enshrines the spirit of the wife. You can't miss the stunning sculpture of the shrine too.

stamp F

Stamp is in the backside of the shrine.

Stamp E

Minumadai Shinsui Park

4-8Kojiya Honcho ~ 4-5Toneri

The 1.7 km walking path lined with trees is made along the waterway which had been used as an agricultural irrigation canal. You can enjoy walking and viewing cherry blossoms in the spring.

stamp E

Stamp D

Ikou Iseki Park

4-9-1Higashi Ikou (18-min. walk from Takenotsuka Sta. West Ext.)

Would you like to experience an ancient time? In a replica of a pit-house, you can experience the ancient life. A lot of unearthed potteries are displayed in the exhibition hall in the park.

Open: 9:30 ~ 16:00 (Exhibition hall 10:00 ~ 16:00)
Closed: Year end and New Year holidays Entrance free

stamp D

Let's look in a pit house!

Stamp C

Shirahataduka Shiseiki Park

3-10-14Higashi Ikou (10-min. walk from Takenotsuka Sta. West Ext.)

This is the only park where the ancient tomb remains in Takenotsuka area. It is 12m wide and 2.5m high.

stamp C

Please experience an ancient life!

Stamp B

Hanahata Memorial Garden / Oukatei

4-40-1Hanahata (3-min. walk from Danchi-iriguchi or Hanahata yon-chome of Tobu bus stop)

The traditional Japanese garden is surrounded by stone walls and moats. Oukatei café is in such a beautiful garden.

Open : 9:00 ~ 17:00 (café: 9:30 ~ 17:00 LO 16:30)
Closed: Monday (or the following day when it falls on national holiday or Oct.1) / Year end and New Year holidays

stamp B

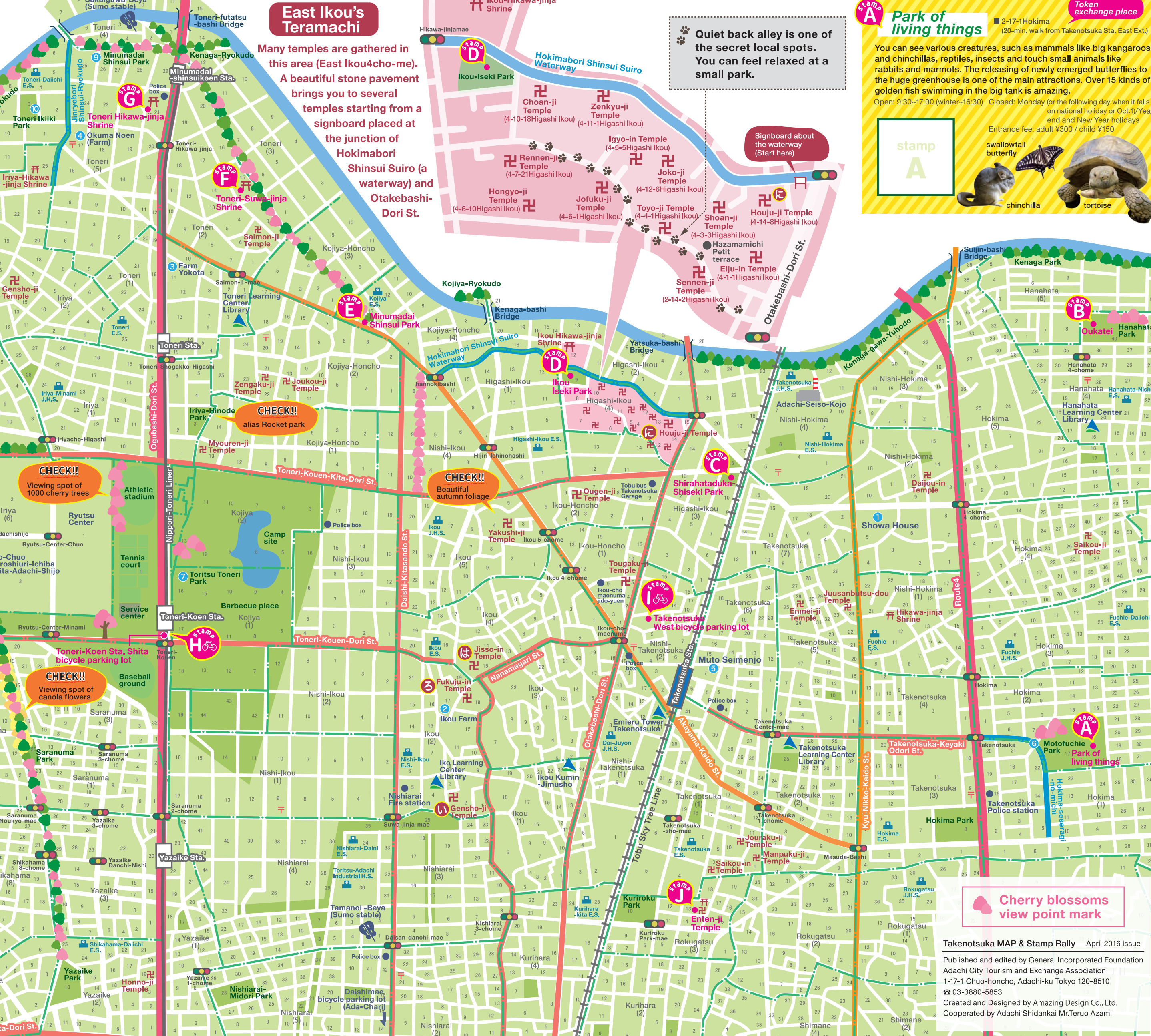
Meet Ikou's Shichifukujin (Seven Lucky Gods)

If you want to be blessed, please visit each temple of the Seven Lucky Gods, especially during the first week of the New Year. It takes about an hour to visit all temples on foot.

- 1 Gensho-ji (2-2-35Ikou)**
Ebisuten "God of Prosperity"
- 2 Fukuju-in (2-18-18Ikou)**
Jurojin & Fukurokuju "God of Longevity" & "God of Happiness"
- 3 Jisso-in (4-15-11Ikou)**
Daikokuten & Benzaiten & Bishamonten "God of Wealth" & "Goddess of Art" & "God of Warriors"
- 4 Houju-ji (4-14-8Higashi Ikou)**
Hoteison "God of Health"

Go walking "Ryokudo" (Green roads)!

Adachi City has about 20 promenades and Ryokudo (green roads) to walk. Nearly half of them are gathered in this area. Minumadai Shinsui Park, one of the main green roads, was changed from an irrigation canal to a waterway park with lush greenery when Adachi City was transformed from an agricultural area to residential city around 1980. There are many walking roads in the western part of Takenotsuka too. So you can enjoy traveling around on foot or by bicycle.



Stamp A

Park of living things

2-17-1Hokima (20-min. walk from Takenotsuka Sta. East Ext.)

You can see various creatures, such as mammals like big kangaroos and chinchillas, reptiles, insects and touch small animals like rabbits and marmots. The releasing of newly emerged butterflies to the huge greenhouse is one of the main attractions. Over 15 kinds of golden fish swimming in the big tank is amazing.

Open: 9:30-17:00 (winter-16:30) Closed: Monday (or the following day when it falls on national holiday or Oct.1) / Year end and New Year holidays

stamp A

Entrance fee: adult ¥300 / child ¥150

Cherry blossoms view point mark

Takenotsuka MAP & Stamp Rally April 2016 issue
Published and edited by General Incorporated Foundation Adachi City Tourism and Exchange Association
1-17-1 Chuo-honcho, Adachi-ku Tokyo 120-8510
03-3880-5853
Created and Designed by Amazing Design Co., Ltd.
Cooperated by Adachi Shidankai Mr.Teru Azami